

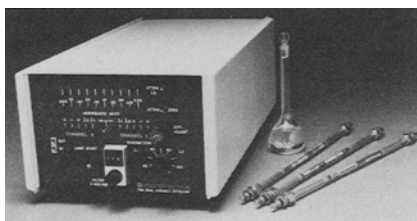
New Products

FACE MASK

A face mask from the American Convertors provides barrier protection against nontoxic particulates such as sulfur, calcium carbonate, titanium dioxide and zinc stearate. The lightweight, nonwoven disposable mask features a molded nose bridge. The mask's flanged edging prohibits air chamber contamination. Contact: American Convertors Industrial Products Marketing Dept., 1740 Ridge Ave., Evanston, IL 60201.

ANTIFOAM EMULSIONS

The General Electric Company has introduced AF 9020 silicone antifoam, a 20% active aqueous emulsion readily dispersible in warm water or cold water with mild agitation. The antifoam meets FDA food grade requirements and is designed for either direct or indirect addition in food-related applications. It can also be used for industrial purposes. Contact: General Electric Co., Silicone Products Div., Rubber and Fluid Products Dept., Waterford, NY 12188.



WAVELENGTH DETECTOR

Micrometrics' dual variable wavelength detector uses two selectable wavelengths to analyze chemical compounds of like or similar molecular structure. Monitoring of a sample at two different wavelengths allows sample constituent comparisons based on absorbance, absorbance ratio, absorbance sums and absorbance differences. Results reflect real comparisons because detection occurs in a single sample cell. Chromatographers can also use the new detector to verify the purity of eluting compounds, selectively to eliminate unwanted peaks, to collect pure sample components and to characterize chemical species doubly. Contact: Micrometrics Instrument Corp., 5680 Goshen Springs Rd., Norcross, GA 30093.



SPECTROMETERS

An advanced series of high resolution NMR spectrometers, the AM Series, has been introduced by Bruker Instruments. The AM Series includes micro-processor control of console operation, an advanced data system with large memory capacity and an eight-color raster scan display processor and plotter. Available frequencies range from 200 to 500 MHz. Contact: Bruker Instruments Inc., Manning Park, Billerica, MA 01821.

TEMPERATURE RECORDER

Wahl Instruments Inc. has a low temperature miniature temperature recorder designed to detect overheating of critical computer components. The self-adhesive recorder's four-position range is 27-32-37-43 C. As each pearl grey indicator is exposed to heat exceeding its calibrated temperature, it turns irreversibly black. The recorder's size permits installation on parts and in areas where other recording instruments prove impractical. Additional temperature increment selections up to 254 C are available. Contact: Temp-Plate Div., Wahl Instruments Inc., 5750 Hannum Ave., Culver City, CA 90230.



TITRATOR

Brinkmann Instruments Co. now offers its Metrohm Karl Fischer titrator designed to simplify and

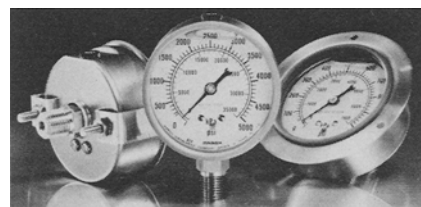
automate measurement from 10 ppm up to 100% in gases, liquids or solids. Sample weight may be dialed in or entered by direct connection to an electronic balance. The digital display gives a direct reading in percent of water with an accuracy of 0.01 or 0.001%. The titrator is available in six configurations. Contact: Brinkmann Instruments Co., Cantiague Rd., Westbury, NY 11590.

LAB STEAMWASHER

Labconco Corp. has a laboratory steamwasher with 27 potential cycle variations, each with steam-action cleaning. A steam generator vaporizes water inside the tank to penetrate and loosen residue on labware. Contact: Labconco Corp., 8811 Prospect, Kansas City, MO 64132.

PIPE INSULATION

CertainTeed Corp. has introduced an 850 F rated, all weather jacketed fiber glass pipe insulation system. This one-piece, snap-on pipe insulating system includes a durable, corrosion-resistant grey jacket, so both insulation and jacket go on the pipe in one step. The product is designed to maintain superior thermal properties with an average 20% lower K value at 300 F mean temperature when compared with equal thicknesses of calcium silicate. Contact: CertainTeed Corp., Valley Forge, PA 19482.



GAUGE

Marsh Instrument Co. has a stainless steel, liquid-filled gauge designed to fit within the 63 mm panel hole now used in most industrial and processing applications. The gauge is offered in either flush or front-flanged case patterns with center-back connection. Available with either a copper alloy or stainless steel tube construction, the gauge has ranges to 5,000 psi with dual psi/kPa scales. Contact: Marsh Instrument Co., PO Box 1011, Skokie, IL 60076.